

Relaxed / Low Sensory Guide

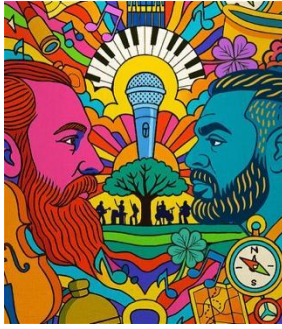


Image Description: *Brightly colored cartoon of a bearded man facing an indigenous man with a microphone, keyboard in the middle and a tree representing the tree the show is set at.*

Fiasco: A Burke and Wills Musical

by Sammy J

- WEDNESDAY, 8 OCT
- THURSDAY, 9 OCT
- FRIDAY, 10 OCT
- SATURDAY, 11 OCT
- SUNDAY, 12 OCT LOW SENSORY
- WEDNESDAY, 15 OCT
- THURSDAY, 16 OCT
- FRIDAY, 17 OCT
- SATURDAY, 18 OCT
- SATURDAY, 18 OCT

Duration 60 (IN APPROX MINUTES)

VENUE - ETU Ballroom, Trades Hall

ADDRESS – Trades Hall, Cnr Lygon and Victoria Sts

SUBURB- Carlton

Relaxed / Low Sensory Guide

The Performers & Characters

Actor Name + Headshot+ Character Bio	Actor Name + Headshot+ Character Bio
 <p data-bbox="418 695 708 720">Sammy J as William Wills</p> <p data-bbox="289 730 821 869">English, second in command of the expedition. Delights in humbly taking scientific measurements and detailing their journey in his diary. Joined the expedition so people would stop making fun of his name.</p>	 <p data-bbox="878 730 1385 869">James Pender as Robert O'Hara Burke Irish, tempestuous leader of the expedition to walk from Melbourne to the Gulf of Carpentaria. Desperately in love with an opera singer and hoping this will win her affections.</p>
 <p data-bbox="394 1140 711 1165">Emily Chen as Charley Gray</p> <p data-bbox="280 1171 816 1226">Scottish, former sailor. Always hungry. Speaks only through percussion.</p>	 <p data-bbox="865 1161 1385 1249">Richard Vaudrey as John King Irish camel handler. Humble, <u>hard working</u>, obeys orders, constantly overlooked.</p>
 <p data-bbox="410 1560 698 1585">Pirritu (Brett Lee) as Jack</p> <p data-bbox="280 1591 833 1680">First Nations local, intrigued by the ineptitude of the white men who have turned up at his creek. Happy to help <u>them</u>, <u>but</u> also has his own life going on.</p>	

Relaxed / Low Sensory Guide

Visual Story

You can find the Melbourne Fringe Visual Story on their [website](#).

Content advice, warnings and accommodations:

This musical comedy reimagines the Burke and Wills expedition through songs and satire. It includes themes of death, hunger, and colonisation, though these are presented with humour rather than graphic detail. One-character dies, there is mention of physical violence, and food poisoning causes hallucinations. Live music and percussion are used, but at most songs moderated volume. There is one louder song called 'Up the Guts' which happens about 40 minutes into the show, it is after the song 'Measure'. Lighting is mostly static, with no strobes or sudden blackouts.

Open Door Policy: No lock out, people can come and go as they please.

Move-around Policy: People can rock, stim, hum, pace, change seats and come/go as they need/please.

Open Phone Policy Audience can use support devices during the performance. Recording is prohibited..

What to Expect:

The show is a live band performance comprising of the following musical instruments: Drums, vibraphone, bass guitar, electric guitar, acoustic guitar, ukelele, cello and violin

Relaxed / Low Sensory Guide

Getting There:

Address: Location Cnr Lygon & Victoria Sts Carlton Victoria 3053

Google Map location: <https://www.google.com/maps/search/?api=1&query=-37.80660744203069,144.9661777566397>

Parking: Metered street parking is available.

Nearest Train Station: Melbourne Central Nearest Trams Stops Routes 1, 3/3a, 5, 6, 16, 64, 67 and 72 #4 Queensberry St/Swanston St

Nearest Bus Stop Bus Routes: 200, 200-207 combined

Trades Hall/Lygon St stop Step-free access: This venue has no stairs or all stairs can be bypassed via a ramp, lift or elevator. Lift access via Lygon St entrance. No Accessible Parking The venue has no accessible parking.

The Space

The entrance to the venue is on Lygon St. You can head up the front stairs and through the main doors, from there head right to get to the Loading Dock. If you need step free access, there is lift at the front of the building and our team will be able to guide you from there to the Loading Dock. Once you're in the Loading Dock you will need to go to the first floor to the ETU Ballroom.

Relaxed / Low Sensory Guide

Front of the building:



The loading dock bar on the ground floor:



Inside the ETU Ballroom on level one:



Relaxed / Low Sensory Guide

Feedback

For additional information, please contact Production Assistant Julz Hay: julzhay@gmail.com